

Coronary PRO 8

Procedural Training Module

Mentice Coronary PRO is the professional, advanced training module for Coronary Angiography and Intervention. Coronary PRO enhances hands-on training of technical skills for both the novice and more experienced invasive cardiologists. Coronary PRO actively reproduces the challenges faced in complex coronary interventions – from deciding on the intervention strategy to managing complications based on patient specific data and treatment options.

Coronary Angiography

Covering acquisition of angiography skills, including:

- Selection and use of real procedural tools: wires, catheters, balloons, stents, etc
- Determine optimal fluoroscopic projections and positioning of C-arm
- Gaining access to the aortic root (femoral and radial) and engaging the guide catheter in the coronary ostia
- Identification of lesions and coronary anomalies
- Acquisition of LV-grams
- Understand the principles of radiation safety
- Recognize and respond to changes in vital signs

Coronary Intervention:

The intervention phase covers the basics of PCI, including:

- Procedural steps for coronary intervention
- Procedure planning and options based on patient scenarios (including possible amendment of plan and devices)
- Use of appropriate guides for backup support in both femoral and transradial approaches
- Complete PCI, including navigation of wire through lesion, pre-dilatation, placement of stent, post-dilatation
- Performance of post treatment angiogram to assess outcome

Complex Scenarios:

Comprehensive cases (co-developed with senior cardiology proctors) provide an array of challenging cases and situations. Trainees will decide on treatment options and manage a range of complications as they progress in the intervention. Scenarios include:

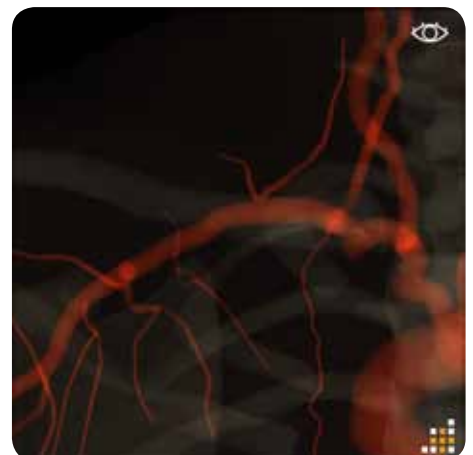
- AMI - covering different types of STEMI scenarios including cardiogenic shock
- ACS - Acute Coronary Syndrome
- CTO - Chronic Total Occlusions
- MVD - Multivessel Disease, training of different treatment strategies in complex scenarios

The Complex Scenario option includes complications such as dislodging clot, no reflow, spasms, perforations and dissections to challenge the learner in a safe environment. Treatment options include use of specialty devices such as aspiration catheters, IABP and a broad range of medications.

Coronary PRO provides the learner with cases that increase in complexity and difficulty generating a comprehensive educational suite that integrates with conventional training programs.



AMI patient with clot blocking the artery



Tortuous arteries requiring deep-breathing during radial approach



Example of a cardiogenic shock case

Features

- Detailed patient scenarios
Demographics, clinical presentation, medical history, current medications, lab values, non-invasive tests, baseline vitals
- Full C-arm and table manipulation
LAO/RAO & CRA/CAU angulations, image intensifier control, table height adjustment, magnification, brightness
- Imaging modalities
Positive X-ray, negative X-ray and high resolution 3D mode
- Projection controls
3 pre-set standard projectionst, possible to save user preferred projection for later use in training case
- Puncture Site
- Both femoral and radial access
- Introducer sheath
Possibility to select introducer sheath size
- Contrast injections
- Manual syringe injection
- Power injector with user definable volume and injection rate
- Procedural complications
Spasms and dissections
- Imaging
- Series: cine recording, playback, acquisition of landmarks, ability to return C-arm to previous projections and blending of landmarks
- Measurement: easy to use vessel and lesion measurement system
- Vital signs - dynamic information
Provides accurate calculations of haemodynamic and EP data obtained during catheterization
- Aortic (AO) pressure curves
- 12-lead ECG, ability to select any 3 for dynamic display
- Blood pressure, heart rate, respiratory rate, oxygen saturation displayed
- Medication
Variety of drugs to deal with complications and events that occur during the procedure

- Interaction
- Deep breathing
- Defibrillation
- Manage Balloon-pump
- "Fluoro & Vitals" screen
- Realistic fluoroscopic image
- Status bar with key case statistics
- Vital signs always visible
- X-ray reference image of patient positioning
- Device status panel showing selected and active devices

Inventory

- Diagnostic catheters
- .035" wires
- Guiding catheters (6F and 8F)
- .014" standard and stiff wires
- Balloons - compliant/non-compliant
- Stents - bare metal/drug eluting
- Aspiration Catheter
- CTO-Wires
- Covered-stents
- Balloon-Pump
- Micro Catheters

Simulation

- 6 Angiography cases, 3 LV cases, 12 Intervention cases, 10 Complex scenarios (AMI,ACS,CTO,MVD)
- Anatomically and haemodynamically accurate simulation
- Simulation responsive to medication
Drugs are used in the simulation to treat complications and the virtual patient's vitals respond accordingly
- Realistic device behavior
- Fully integrated vital signs
ECG leads reflects flow behavior within the coronary arteries over time

VIST® - Family of Simulation Solutions

provides a relevant, realistic teaching and learning environment for hands-on training of angiographic and interventional skills.

VIST® Simulator Systems

The VIST® and the VIST®-C systems share unique advantages in terms of highest fidelity, clinical realism and use of actual clinical devices.



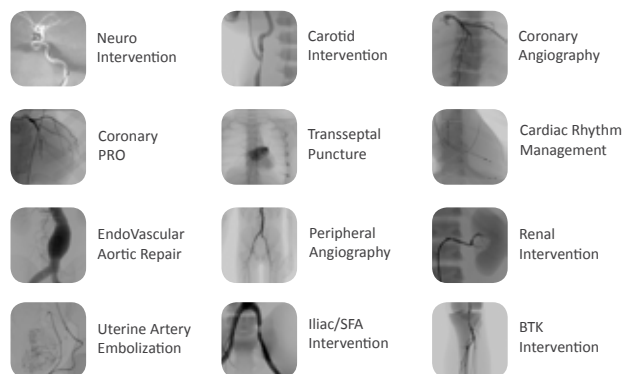
VIST® Lab is compatible with both VIST® and VIST®-C systems.

VIST®-C is a fully portable high-fidelity simulator.



VIST® Training Modules

A structured and comprehensive suite of modules with clearly defined learning objectives giving trainees exposure to a wide range of patient scenarios and anatomical variations.



MENTICE is a global medical simulation company founded in 1999 with headquarters in Gothenburg, Sweden. The company pioneered virtual reality for medical training and is today the global leader in endovascular simulation.

Contact us to learn more about simulation and how it can benefit your training efforts:

• HQ: +46-31-339 94 00 / info@mentice.com • US: +1-877-MENTICE / usinfo@mentice.com

