

Acute Stroke Intervention

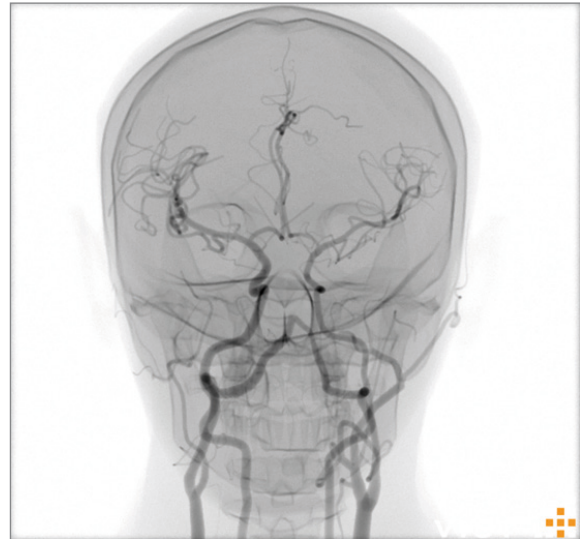
Procedural Training Module

- ✦ *Mentice Acute Stroke Intervention* is designed for the fields of interventional neuroradiology and neurosurgery, or specialists in adjacent fields who want to expand their understanding of and skills in endovascular stroke treatment. The module allows for safe and effective training of individuals and teams, both stand-alone or as part of an endovascular stroke program. The module supports VIST® Case-It, which allows end users to import real cases from anonymous DICOM data. Thus an up-to-date and unique comprehensive training library can be built directly from the hospital's own practice.

This module assumes familiarity with neurology, preoperative CTA/MRA and experience with endovascular catheterization and intervention. Mechanical thrombectomy devices including stent retrievers, as well as options to use advanced viewing with biplane fluoroscopy and 3D overlay, are included for teaching of state-of-the-art techniques. By importing real-life hospital cases from CTA or MRA, training possibilities are virtually endless and scenarios can be added and adapted to fit custom training objectives.

An ideal platform for:

- Safe training of endovascular stroke treatment in a stepwise approach
- Use of up-to-date treatment options: techniques and devices
- Training in required technical and manipulation skills
- Review, validation and amendment of the procedure plan



Acute Stroke Intervention

Designed for neurointerventionalists, neurosurgeons and specialists in adjacent fields who want to expand their knowledge and skills in endovascular stroke treatment.

Functionality & Features

- Stent retrievers and modern thrombectomy devices included
- Type 1, 2 and Bovine arch aortic takeoff variations
- Advanced viewing with biplane C-arm, DSA, shutters and 3D overlay
- Recorded cine loops can be exported for post-op review
- VIST® Case-It support makes it possible to import user's own cases

Procedural training objectives

- Determining correct diagnosis, cause of condition and prognosis
- Suggesting differential diagnosis
- Choosing correct pharmacological therapy and endovascular strategy
- Operating biplane fluoroscopy for optimal imaging views
- Management of difficult aortic arch anatomies
- Building familiarity with modern mechanical thrombectomy devices
- Safely navigating and deploying stent retrievers to remove clots

VIST® -Lab



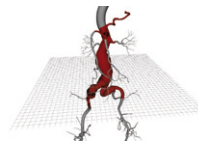
Our stationary and flexible simulation platform. The optimal solution for realistic work flow and team training.

VIST® -C



A portable high-fidelity simulator. Robust and intuitive to set up and use, small foot print - possible to check in on flights.

VIST® Case-It



Import patient specific anatomies, stitch them onto a template to create a full patient anatomy for procedural training.

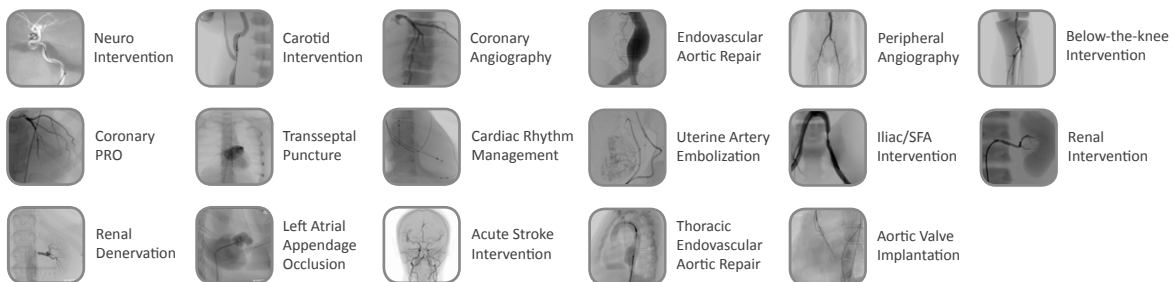
Validation



- ✓ Face and content validity
- ✓ Construct validity
- ✓ Training potential
- ✓ Transfer of training

VIST® Training Modules

A structured and comprehensive suite of modules with clearly defined learning objectives giving trainees exposure to a wide range of patient scenarios and anatomical variations.



MENTICE was founded in 1999 and pioneered virtual reality for medical training. Today Mentice is the global leader in medical vascular simulation with its headquarter in Gothenburg, Sweden, and more than 600 vascular simulator installations all over the world.



Contact us to learn more about simulation and how it can benefit your training efforts:
 HQ: +46 31 339 94 00 • info@mentice.com • US: +1-877-MENTICE • usinfo@mentice.com
 www.mentice.com

MENTICE

